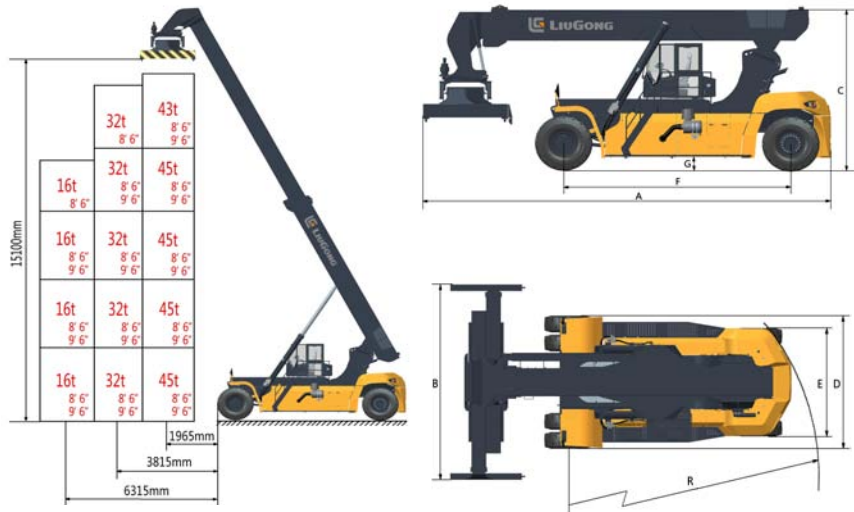


CLG2450
SPECIFICATIONS >>>

General	Model		1		CLG2450
	Power Type		2		Diesel
	Rated Capacity		3	kg	45,000
	Service Weight		4	kg	73,500
Capacity	Extend Distance / Max. Capacity	The first row	5	mm/kg	1,965 / 45,000 (4 layer), 1,965 / 43,000 (5 layer)
		The second row	6	mm/kg	3,815 / 32,000 (5 layer)
		The third row	7	mm/kg	6,315 / 16,000
Dimention	Max. Lifting Height		8	mm	15,100
	Max. tilt angle		9	deg	60
	A. Overall Length		10	mm	11,680
	B. Overall Width		11	mm	6,052-12,185
	C. Overall Height		12	mm	4,747
	D. Tread Width (front)		13	mm	4,130
	E. Tread Width (rear)		14	mm	3,360
	F. Wheelbase		15	mm	6,500
	G. Ground Clearance		16	mm	350
Performance	R. Min. Turning Radius		17	mm	8,500
	Travel Speed (unloaded / loaded)		18	km/h	25 / 15
	Max. Gradeability / Max. Drawbar Pull		19	%/KN	25 / 310
System	Engine	Manufacturer	20		Cummins
		Model	21		QSM11
		Rated Power	22	kW/rpm	261 / 2,000
	Transmission	Max. Torque	23	N·m/rpm	1,830 / 1,400
		Manufacturer	24		ZF
		Model	25		5WG261
		Type	26		ErgoPower
		Gears (front / rear)	27		5/3



Guangxi LiuGong Machinery Co., Ltd.
No. 1 Liutai Road, Liuzhou, Guangxi 545007, PR China
T: +86 0772 388 6124
E: overseas@LiuGong.com
www.LiuGong.com

Like and follow us:



Rated Power	261 kW @ 2,000 rpm
Emission Standard	Tier 3 / Stage IIIA
Rated Capacity	45,000 kg
Service Weight	73,500 kg
Maximum Lifting Height	15,100 mm

CLG2450
REACH STACKER



LG-PB-CLG2450-4-032018-ENG

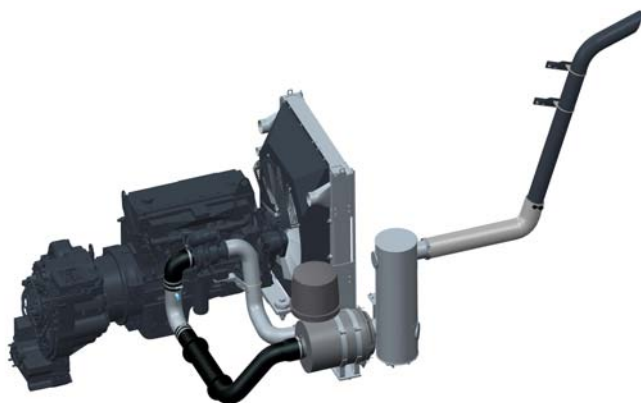
The LiuGong series of logos herein, including but not limited to word marks, device marks, letter of alphabet marks and combination marks, as the registered trademarks of Guangxi LiuGong Group Co., Ltd. are used by Guangxi LiuGong Machinery Co., Ltd. with legal permission, and shall not be used without permission. Specifications and designs are subject to change without notice. Illustrations and pictures may include optional equipment and may not include all standard equipment. Equipment and options varies by regional availability.

TOUGH WORLD. TOUGH EQUIPMENT.

PRODUCT FEATURES

HIGH EFFICIENCY AND ENERGY SAVING

- Use low speed and large torque engine
- Excellent dynamic matching
- Hydraulic system use load sensitive variable system and energy-efficient



HIGH COMFORTABILITY

- Clearly display device
- LED warning light
- Standard configuration air-conditioner and comfortable and reliable seat



HIGH OPERABILITY

- Use world-class operation layout, and industry first-class man-machine Ergonomic plan
- Minor diameter steering wheel, lower arm fatigue.
- The LUDV hydraulic technique is adopted to make the operation more accurate.

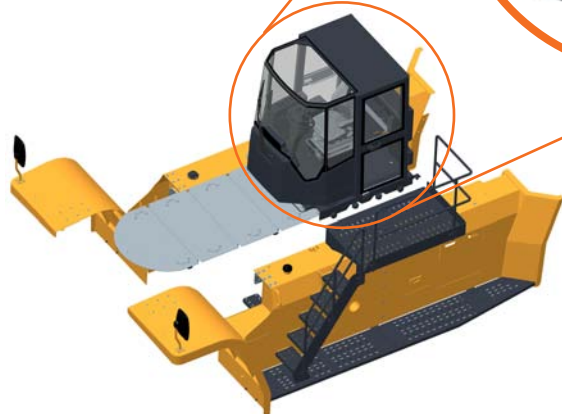
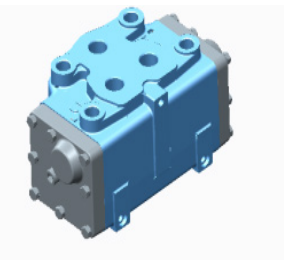
EASY MAINTENANCE

- Open-type frame
- Wide open-angle side-door
- Removable cab
- Commodious service space



HIGH EFFICIENCY AND ENERGY SAVING

- Energy-saving LED lighting
- Powerful variable pump
- Tire pressure sendor
- Start/halt function, saving 10% fuel oil.



STANDARD EQUIPMENT

- Engine Electronic Control
- Electric proportional temperature control water cooling system
- Brake oil radiator
- Hydraulic drive (with torque converter)
- Gear output clutch
- Electric control shift
- Automatic gear shifting
- CAN-Bus Communication
- No wheel rim
- Control valve electric proportional servo control
- Control valve balance control
- Electric proportional temperature control hydraulic oil cooling
- Reverse Sensor
- Steering wheel position display
- Steering lights automatically turn-off
- Cold and warm air conditioner
- Overload protection
- Slope lifting prohibition
- Steering wheel protection
- Turning speed-limit

OPTIONALS

- Hanger camera
- Backup camera
- Multi - image switching LCD screen
- Machine vision

